

2b
3-17-12

Mr. Mayor and members of the city council

Last Month I appeared here to venerate the George Washington Memorial Highway. So you can imagine my disappointment about the following proposal, apparently being pushed by the City and according to National Park Services, quite forcefully.

The City has approved and is currently looking into the possible implementation of the metro on the Potomac yard. As part of the solution, you are looking at alternatives for its location, one where it was approved for, one on the Yard itself, a no build option and the last one, which is the source of my concern. It not only moves the metro station closer to the GW Memorial Parkway which affects the view shed, but there are also some very offensive side effects.

If you look at the first drawing I gave you, you will see that the alignment moves the tracks closer to the Parkway, further impacting the view shed. Furthermore, you have in blue the current wetlands. The kaki yellow underneath is the area that will be affected by construction. This proposal is recommending that construction take place from the GW Memorial Parkway, that the wetlands be filled in and used as a staging ground for construction, and that a right in right out be built onto the Parkway to accommodate the trucks.

The concerns are two fold; first, this proposal needs a lot of airing. An intrusion into a scenic easement on the parkway is a citywide concern. Secondly, once built there, it will stay, as witnessed by the City Staff telling me they want, and some of you are pushing for, a bridge over the memorial parkway at that spot.

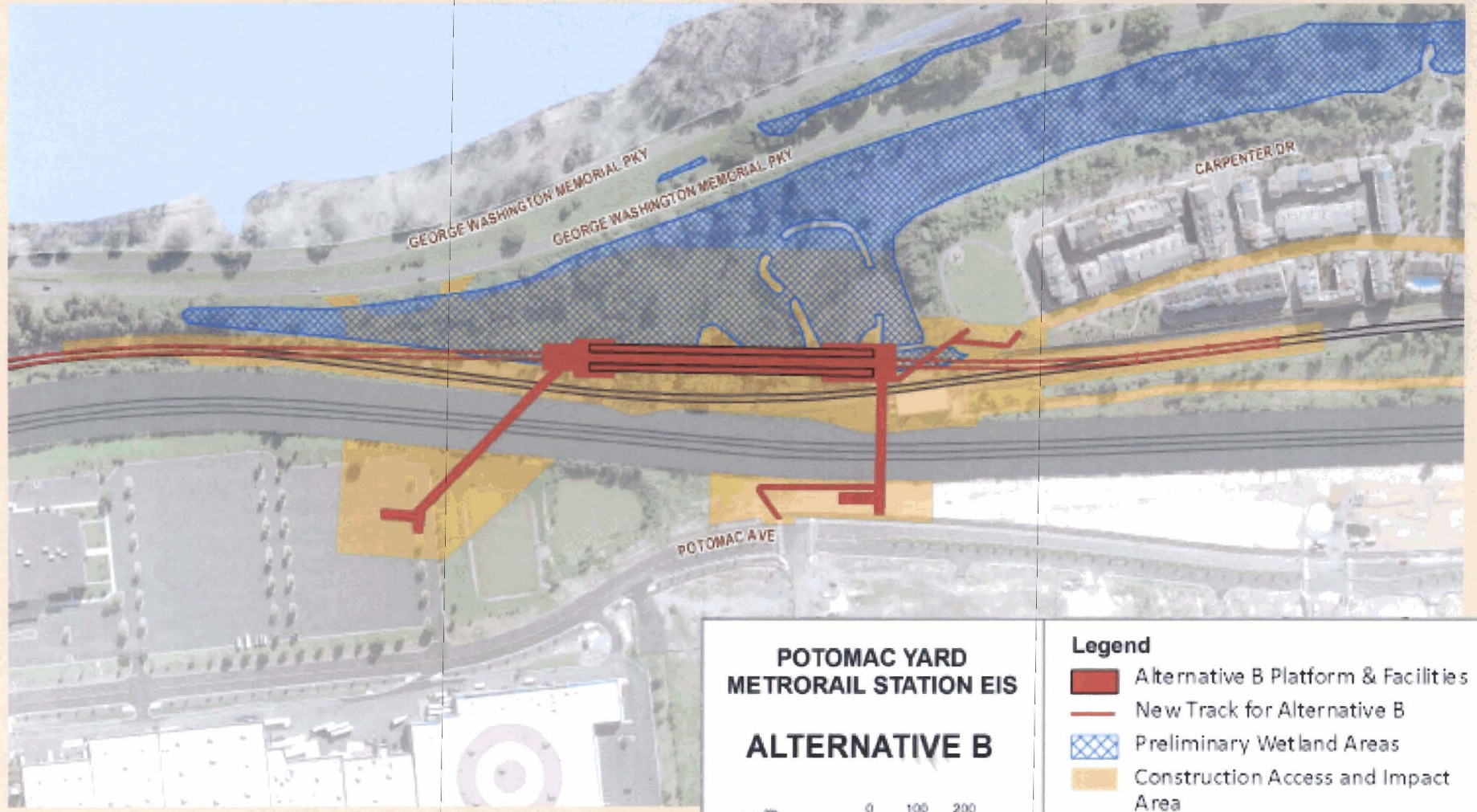
I have heard about the beavers just as we were told it was just "common dirt" that afflicted our neighborhood when we brought up concerns about mirant. Could it be that you miscalculated the area of the wetlands you allowed the developer to fill in. Such that instead we have an oversaturated run off containing highly polluted waters emanating from the piggy Back Yard.

The fact that this proposal has gotten this far without farther review says a lot about where we as a community are heading. The venerable Ed Braswell taught me many things; most significant of which was that as the George Washington Memorial Parkway goes, so goes Old Town, and this alternative is an ominous sign.

Trampling on the historic to achieve a developmental leg up is what we have become if you allow this particular project to go forward. I can hear the voices of Ellen Pickering and Jean Caldwell telling us that we can do better, ... And we must do better for the George Washington Memorial Highway. Not everything needs to be an engineering exercise, some things really matter.

2
3-17-12
submitted by Paul
Hortel

Alternative B



**POTOMAC YARD
METRORAIL STATION EIS**

ALTERNATIVE B

0 100 200
Feet

- Legend**
- Alternative B Platform & Facilities
 - New Track for Alternative B
 - Preliminary Wetland Areas
 - Construction Access and Impact Area

