

**An informal work session with public testimony regarding the proposed development at 220 S Union St by Carr Hospitality will be held by the Alexandria Board of Architectural Review on July 25, 2012 at the end of its regular meeting which begins at 7:30 PM in Council Chambers.**



**MATERIALS AS OF JULY 16, 2012**

Please contact Historic Preservation at 703.746.3833 for [preservation@alexandriava.gov](mailto:preservation@alexandriava.gov) for more information.





OPEN SPACE

BUILDING FOOT PRINT

COVERED ALLEY

OPEN SPACE AT GROUND FLOOR DIAGRAMS

CUMMINGS SITE  
11.012





UNION ST ELEVATION



DUKE ST ELEVATION



STRAND ST (MARCH 2012)



STRAND ST (JULY 2012)



STRAND ST (AS SUBMITTED, JUNE 2012)

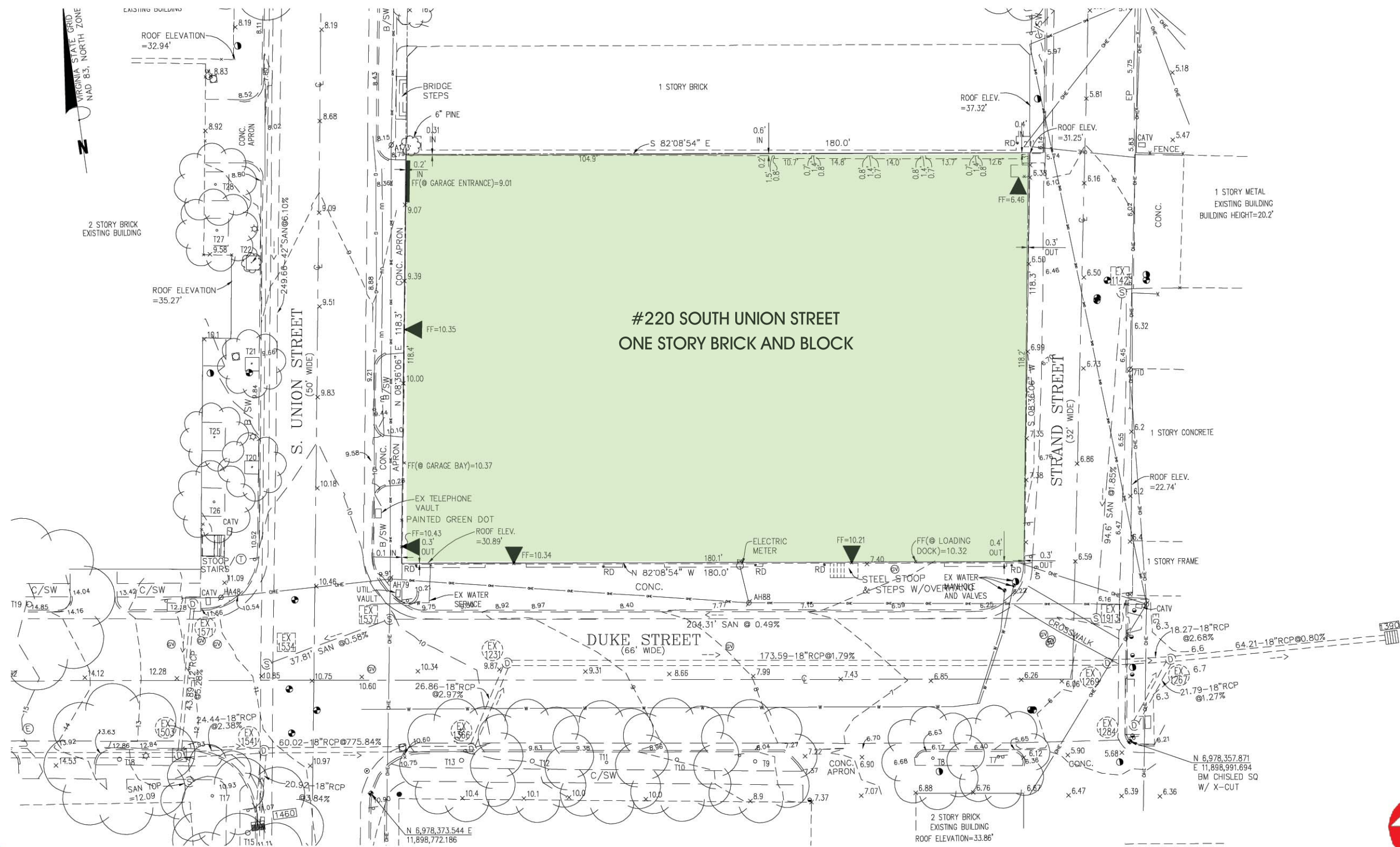
3/32"=1'

**An informal work session with public testimony regarding the proposed development at 220 S Union St by Carr Hospitality will be held by the Alexandria Board of Architectural Review on July 25, 2012 at the end of its regular meeting which begins at 7:30 PM in Council Chambers.**



**MATERIALS AS OF JUNE 25, 2012**

Please contact Historic Preservation at 703.746.3833 for [preservation@alexandriava.gov](mailto:preservation@alexandriava.gov) for more information.





Union St. (NW corner of site)



Duke St. & Union St. (SW corner of site)



Duke St. & Strand St. (SE corner of site)

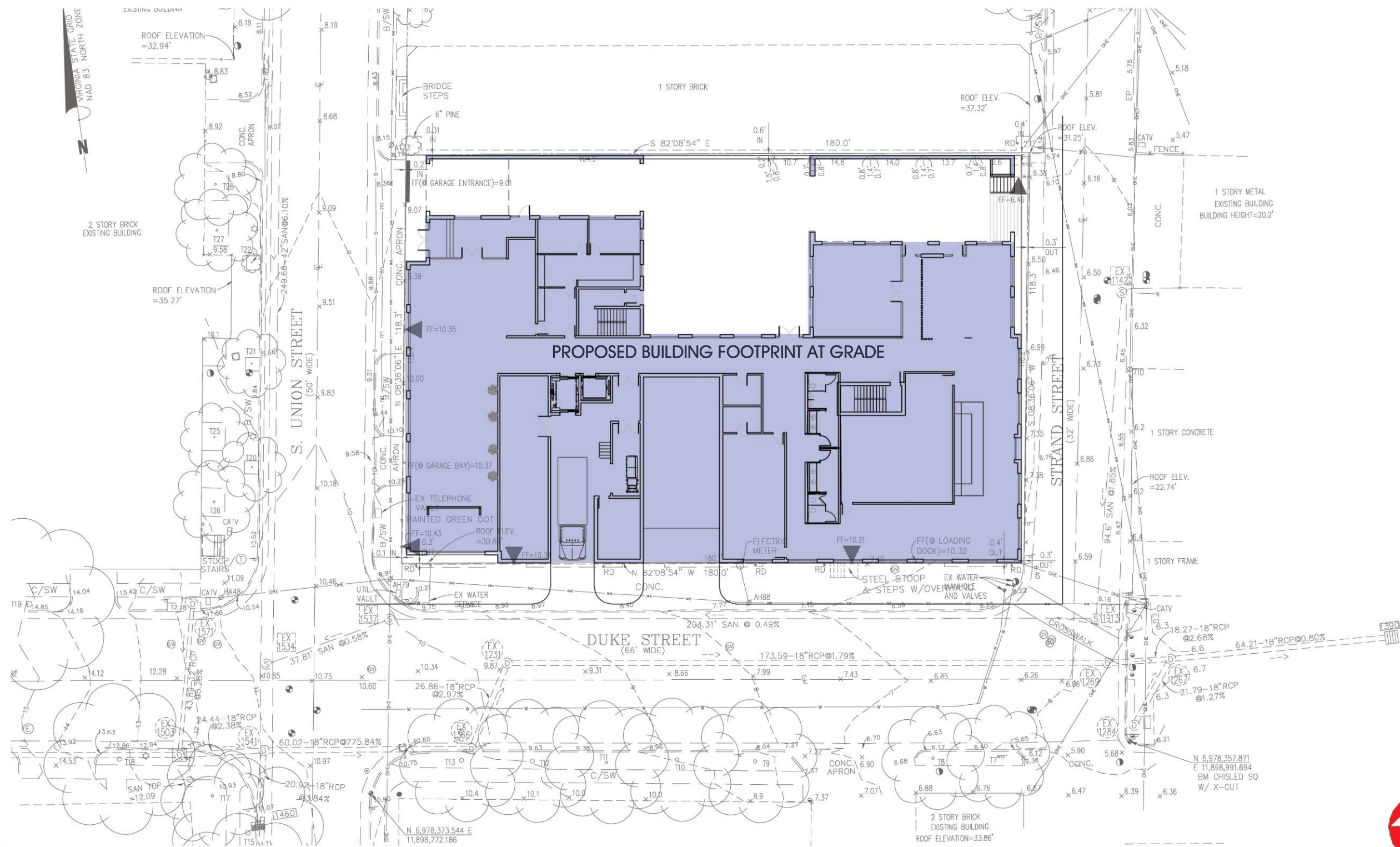


Strand St. (NE corner of site)

The Developer is proposing a new hotel for this site. The existing warehouse structure is not only incompatible with the proposed development, but would render required sub-surface parking unfeasible if it were not demolished.

EXISTING SITE CONDITIONS



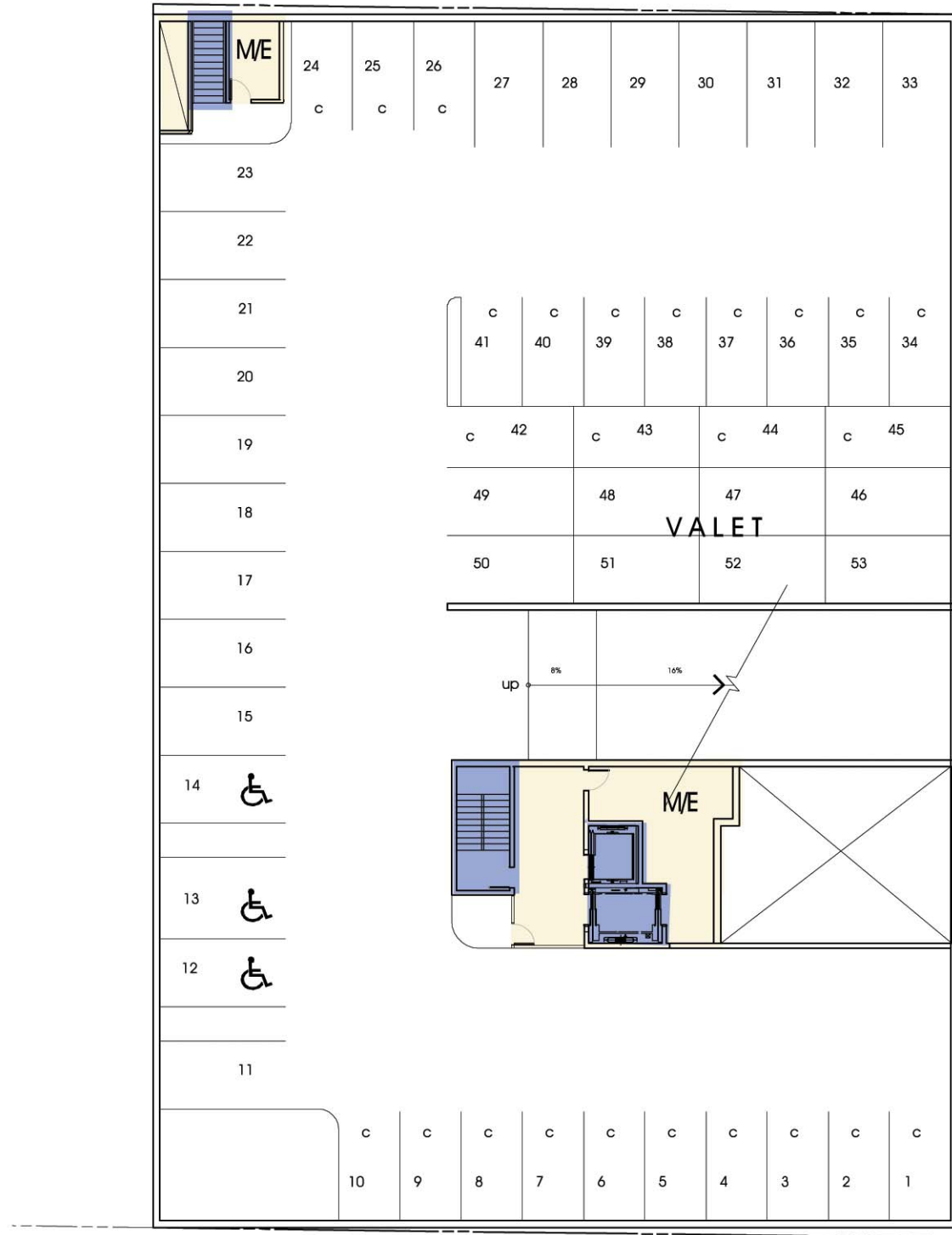


PROPOSED BUILDING LOCATION

CUMMINGS SITE  
11.012

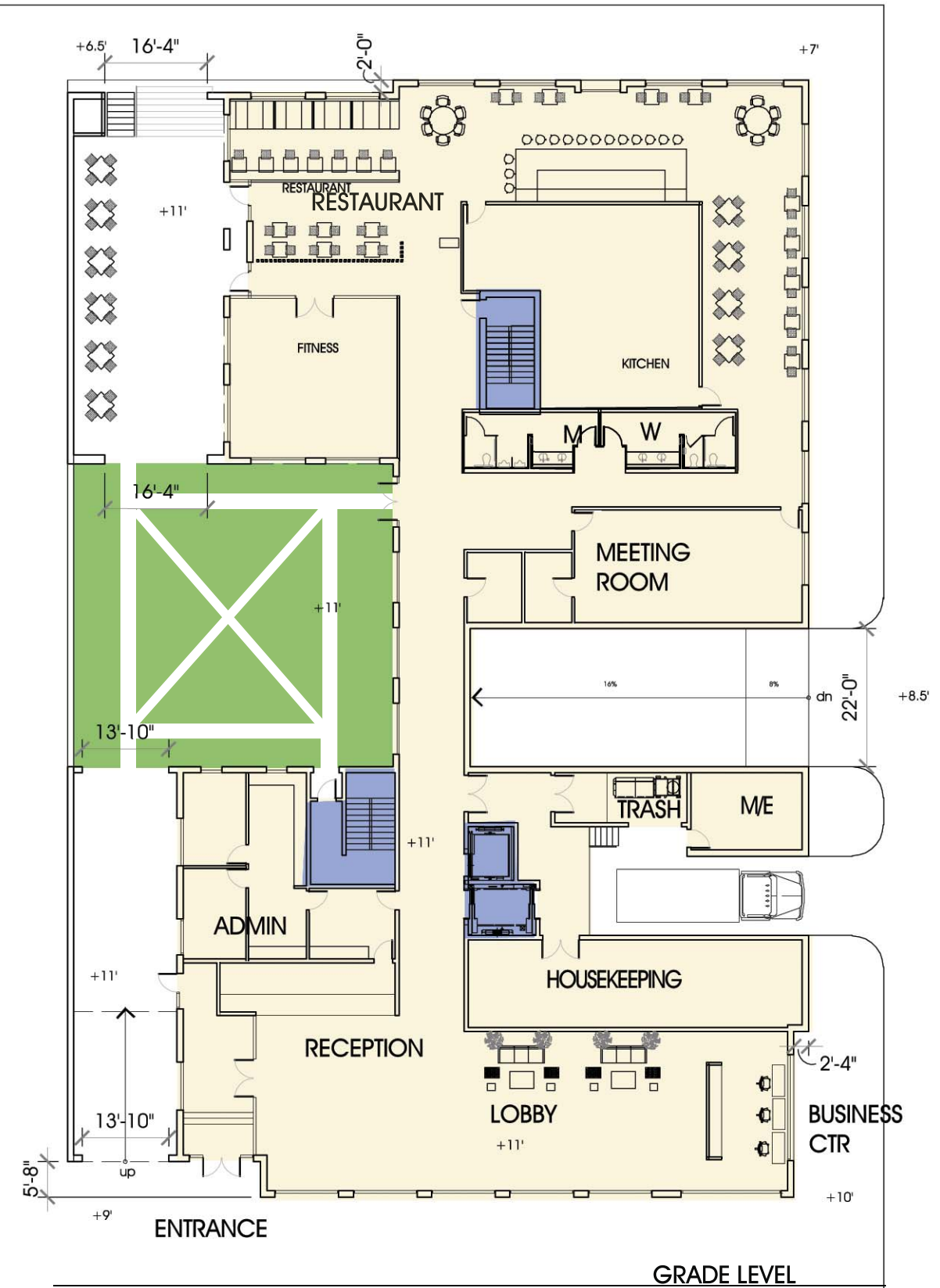






BASEMENT/GARAGE LEVEL

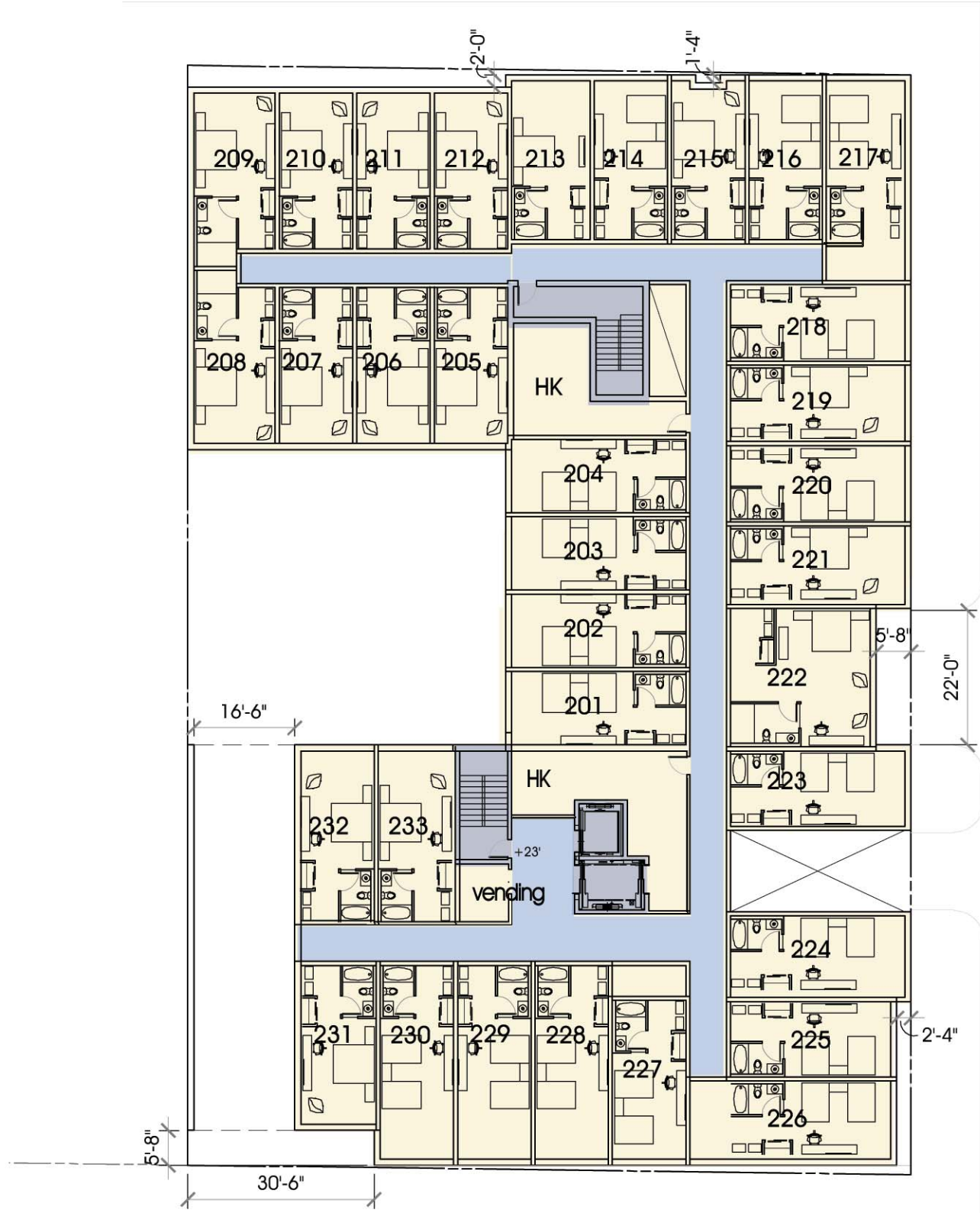
- OPEN SPACE / GREEN ROOF
- HOTEL FUNCTIONS
- VERTICAL CIRCULATION
- HORIZONTAL CIRCULATION



GRADE LEVEL

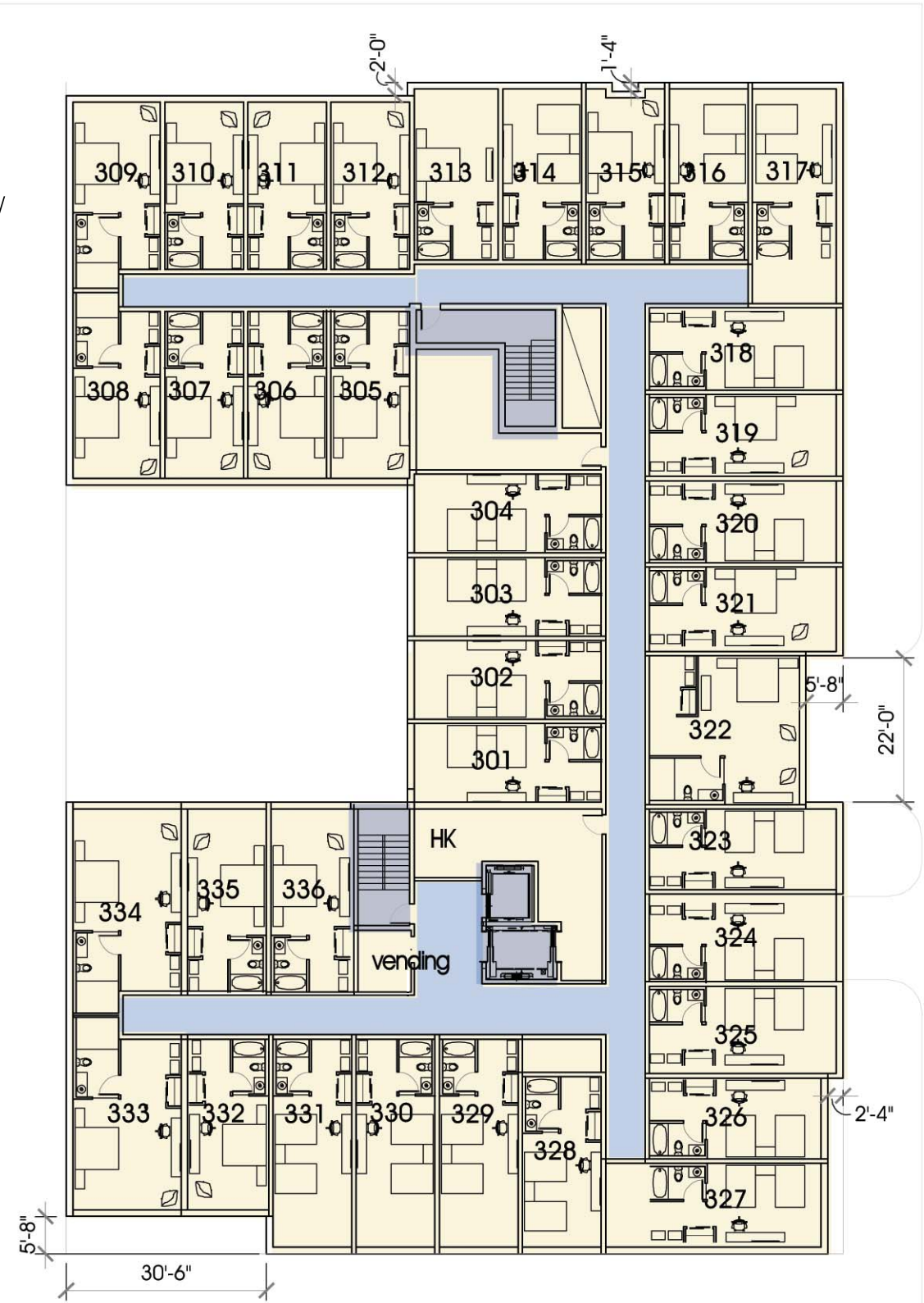
PROPOSED BASEMENT AND GRADE LEVELS

3/64" = 1' - 0"



SECOND FLOOR

- OPEN SPACE / GREEN ROOF
- HOTEL FUNCTIONS
- VERTICAL CIRCULATION
- HORIZONTAL CIRCULATION

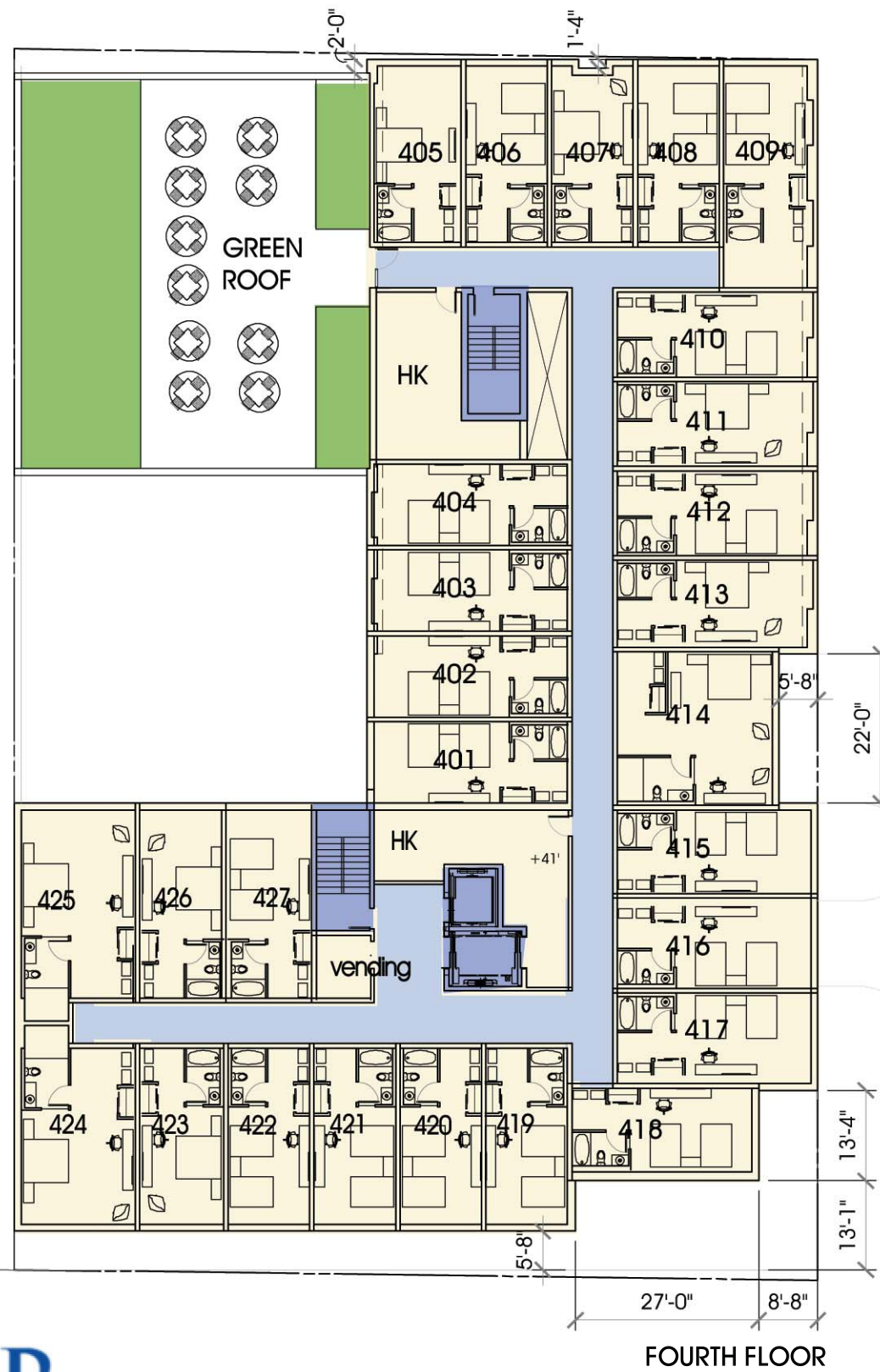


THIRD FLOOR

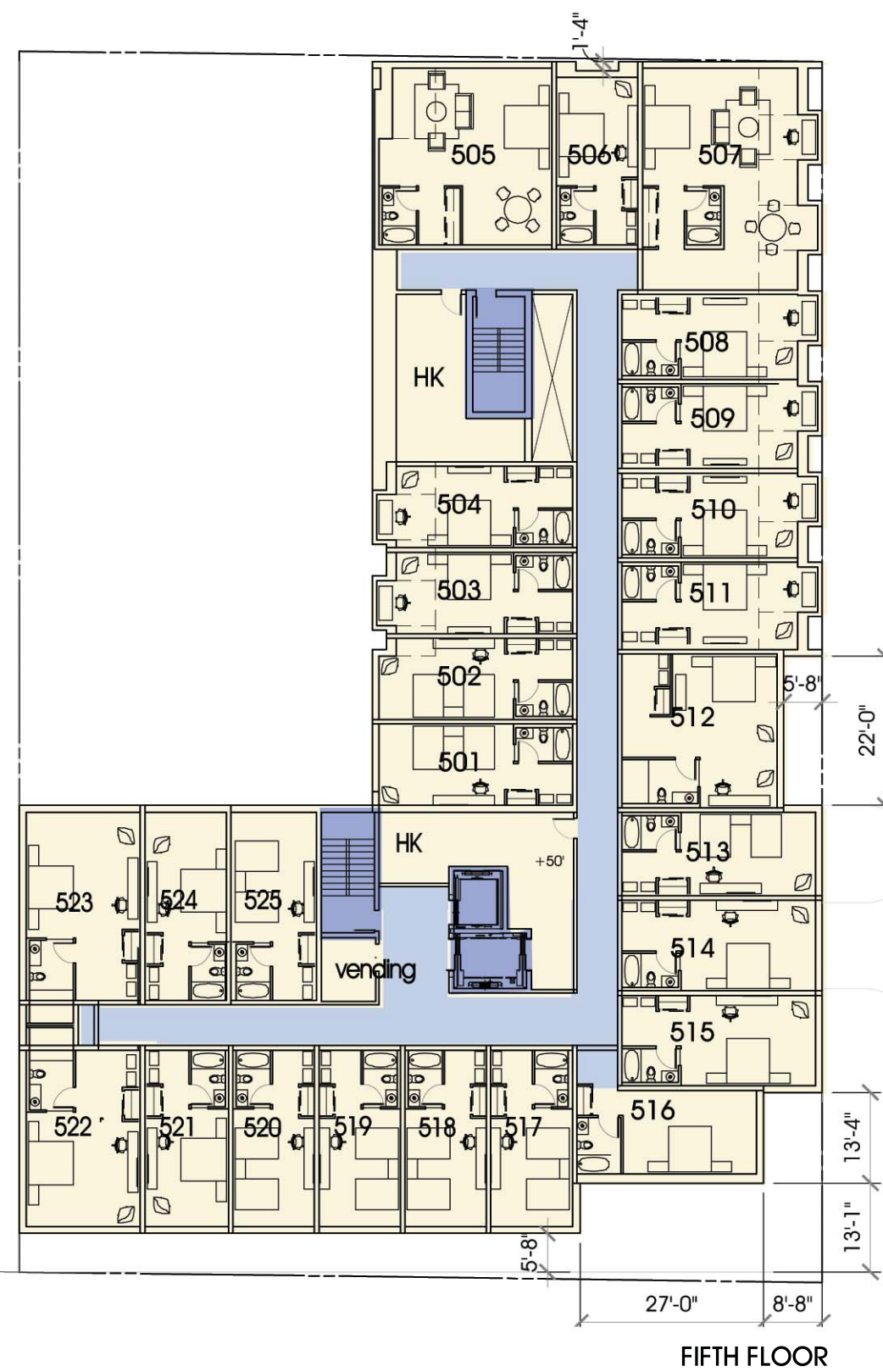
PROPOSED SECOND AND THIRD FLOORS



3/64" = 1' - 0"



- OPEN SPACE / GREEN ROOF
- HOTEL FUNCTIONS
- VERTICAL CIRCULATION
- HORIZONTAL CIRCULATION



PROPOSED FOURTH AND FIFTH FLOORS

CUMMINGS SITE  
11.012





UNION STREET

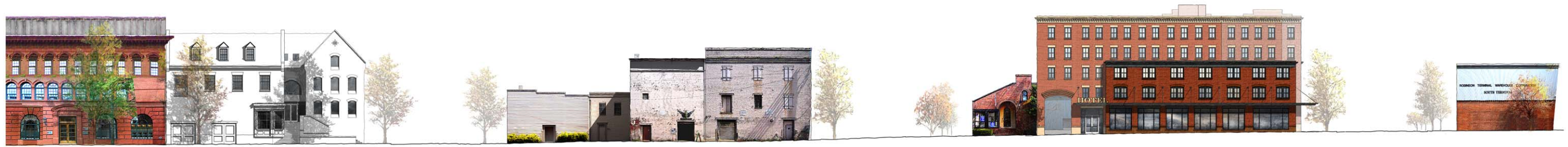


DUKE STREET

PROPOSED WEST AND SOUTH ELEVATIONS

1/16" = 1'-0"





UNION STREET



DUKE STREET



STRAND STREET



PROPOSED BUILDING IN CONTEXT



N.T.S.

June 25, 2012



**CARR**  
HOSPITALITY

UNION STREET BY THE ROBINSON TERMINAL

Existing Condition

June 25, 2012

10

CUMMINGS SITE  
11.012

RUST | ORLING  
ARCHITECTURE



CORNER OF DUKE STREET AND UNION STREET



Existing Condition

June 25, 2012





CORNER OF DUKE STREET AND STRAND STREET



Existing Condition

June 25, 2012



**CARR**  
HOSPITALITY

STRAND STREET

Existing Condition

June 25, 2012

13

CUMMINGS SITE  
11.012

**RUST | ORLING**  
ARCHITECTURE