

## City of Alexandria, Virginia

## MEMORANDUM

DATE: JUNE 18, 2004

TO: THE HONORABLE MAYOR AND MEMBERS OF CITY COUNCIL

FROM: PHILIP SUNDERLAND, CITY MANAGER *ps*

SUBJECT: DUKE STREET CONCOURSE PROGRESS REPORT

---

This memorandum provides a brief update on the status of the construction of the Duke Street Pedestrian Concourse and implementation of concourse-related mitigation measures.

Concourse Construction

The Duke Street Concourse is proceeding on schedule to a pedestrian opening on July 1. The brick work, including pavers, has been completed in the tunnel proper. Work on the South Plaza is proceeding on schedule. All of the walls and slabs on the north ramp have been poured and the brick work is underway. Corman and WMATA's contractor, Grunley-Walsh, continue to work closely to coordinate their work in order to open on July 1.

Mitigation Measures: Shuttle Ridership

PTO shuttle buses continue to operate between the King Street Metro Station and the PTO campus. Since commencing operation on December 8, 2003, the PTO shuttle has carried 69,700 passengers, averaging 516 passengers per day. Currently, the PTO shuttle is providing an average of approximately 600 passengers per day.

Traffic Volumes on Surrounding Streets

Traffic volume counts were performed around the "cordoned" eastern end of Eisenhower Valley the first week of June. Compared to baseline traffic counts taken in late 2003, the current volume of traffic entering and leaving the area has increased by approximately 3,500 vehicles per day or 7 percent. Considering typical seasonal variations in traffic volumes, the major portion of this increase is due to normal increases in travel at this time of year. In this regard, it is important to note that MetroRail ridership has increased by approximately 1,100 trips per day at the King Street Station compared to the same period last year. This significant increase in MetroRail ridership has been sustained since initial occupancy of the first two PTO buildings.

Staff continues to monitor all elements of this concourse project and will keep the Council informed of all developments. Attached is a matrix which gives a monthly status of the mitigation measures, PTO occupancy and transit patterns, and traffic levels in the surrounding

area (Attachment 1). This matrix will continue to be updated until the completion of this project. Recent photos illustrating construction to date are attached (Attachment 2).

Attachments:

1. Duke Street Pedestrian Concourse Matrix

2. Phase III Construction photographs

cc: Richard J. Baier, P.E., Director, T&ES  
Tom Culpepper, P.E., Deputy Director, T&ES  
Emily A. Baker, P.E., City Engineer

## DUKE STREET PEDESTRIAN CONCOURSE MATRIX

	DEC 2003	JAN 2004	FEB 2004	MARCH 2004	APRIL 2004	MAY 2004	JUNE 2004
<b>Mitigation Measures:</b>							
Average number of employees using the Transit Shuttle per day	97	454	739	599	660	612	593 <sup>2</sup>
Notation of any fines and missed interim milestones	Milestone 1 Achieved 11/20/03	N/A	Milestone 2 Achieved 2/17/04	Milestone 3 Achieved 3/26/04	N/A	N/A	N/A
<b>PTO Campus Update:</b>							
Number of employees occupying the Campus at month's end <sup>1</sup>	592	1596	2103	2103	2103	2103	2103
Average number of employees commuting from Crystal City by PTO Shuttle per day <sup>1</sup>	N/A	224	285	253	250	250	250
Average number of employees parking within a PTO garage per day <sup>1</sup>	386	806	956	956	956	956	956
<b>Traffic Volume on Surrounding Streets:</b>							
Average daily number of vehicles entering and leaving East Eisenhower Valley	51,200	N/A	48,000	N/A	53,700	N/A	54,700 <sup>3</sup>

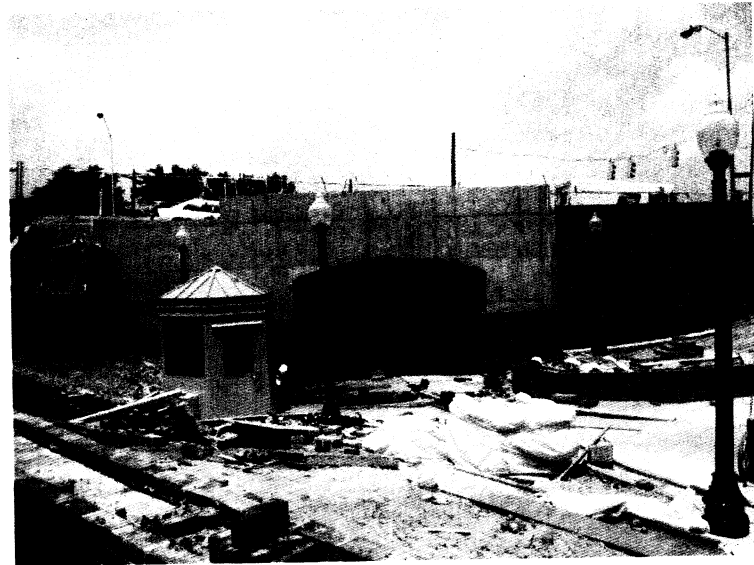
<sup>1</sup>Provided by PTO<sup>2</sup>Through week of June 7, 2004<sup>3</sup>June 1-3, 2004

3

## Duke Street Concourse Pedestrian Tunnel Phase III Construction



North View From Tunnel



North View From Plaza



View From Duke Street



View From Park