

WS
3-3-08



**RUNNING TRACK
SUITABILITY STUDY
MARCH 3, 2008**

RUNNING TRACK SUITABILITY STUDY

- Using available GIS data to determine which sites could best fit a running track facility.
- Standard running track is 400M (meters) in length (National Federation of State High School Associations (NFHS) and the International Amateur Athletic Foundation)
- Standard 400M running track is approx. 530 ft. x 280 ft.
- The only standard 400M track on City owned property is at **TC Williams High School.**



TC WILLIAMS HIGH SCHOOL

- 400M TRACK/120 YD X 66 YD FIELD (TC WILLIAMS EXISTING)
- 350M TRACK/ 120 YD X 56 YD FIELD (APPROX. 4.5 LAPS = 1 MI.)
- 320M TRACK/ 100 YD X 53 YD FIELD (APPROX. 5.5 LAPS = 1 MI.)



- 400M TRACK/120 YD X 66 YD FIELD (TC WILLIAMS EXISTING)
- 350M TRACK/ 120 YD X 58 YD FIELD (APPROX. 4.5 LAPS = 1 MI.)
- 320M TRACK/ 100 YD X 53 YD FIELD (APPROX. 5.5 LAPS = 1 MI.)

BRADDOCK FIELD AND GW SCHOOL



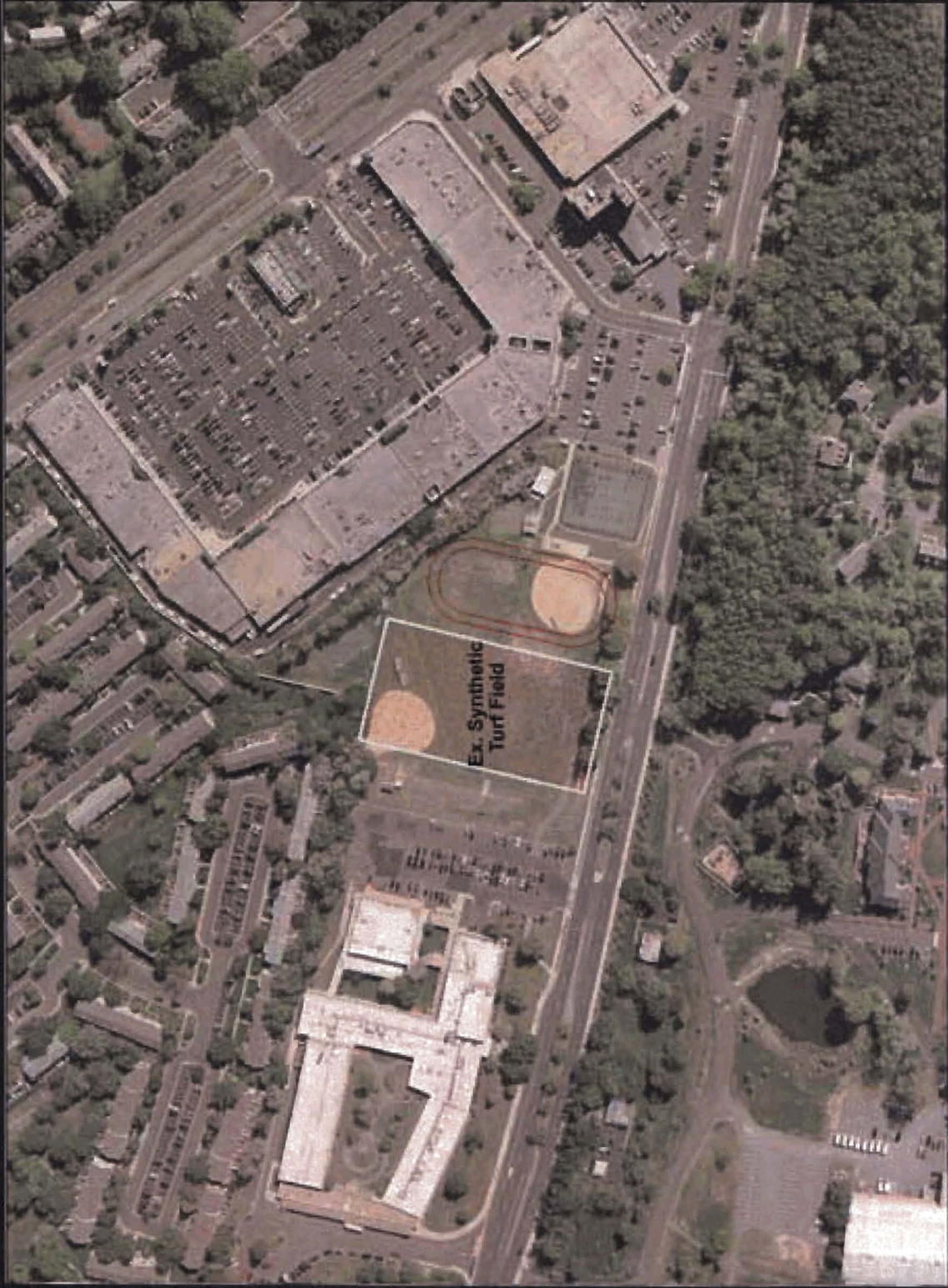
- 400M TRACK/120 YD X 66 YD FIELD (TC WILLIAMS EXISTING)
- 350M TRACK/ 120 YD X 58 YD FIELD (APPROX. 4.5 LAPS = 1 MI.)
- 320M TRACK/ 100 YD X 53 YD FIELD (APPROX. 5.5 LAPS = 1 MI.)

FRANCIS HAMMOND SCHOOL



- 400M TRACK/120 YD X 66 YD FIELD (TC WILLIAMS EXISTING)
- 350M TRACK/ 120 YD X 58 YD FIELD (APPROX. 4.5 LAPS = 1 MI.)
- 320M TRACK/ 100 YD X 53 YD FIELD (APPROX. 5.5 LAPS = 1 MI.)

PATRICK HENRY SCHOOL



MINNIE HOWARD SCHOOL

**200M TRACK/ 100 YD X 45 YD FIELD
(APPROX. 7-8 LAPS = 1 MI.)**