

# Shuttle Bus & Parking

Public Viewing


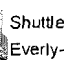
Map 19

NB#1

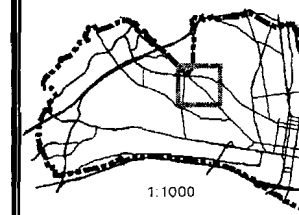
2-14-12

## Legend

**P** Shuttle Parking

 Shuttle Bus Route  
 Everly-Wheatley Funeral Home

## Map Extent



This map was produced by the GIS Division of the Department of Planning and Zoning, City of Alexandria, Virginia.

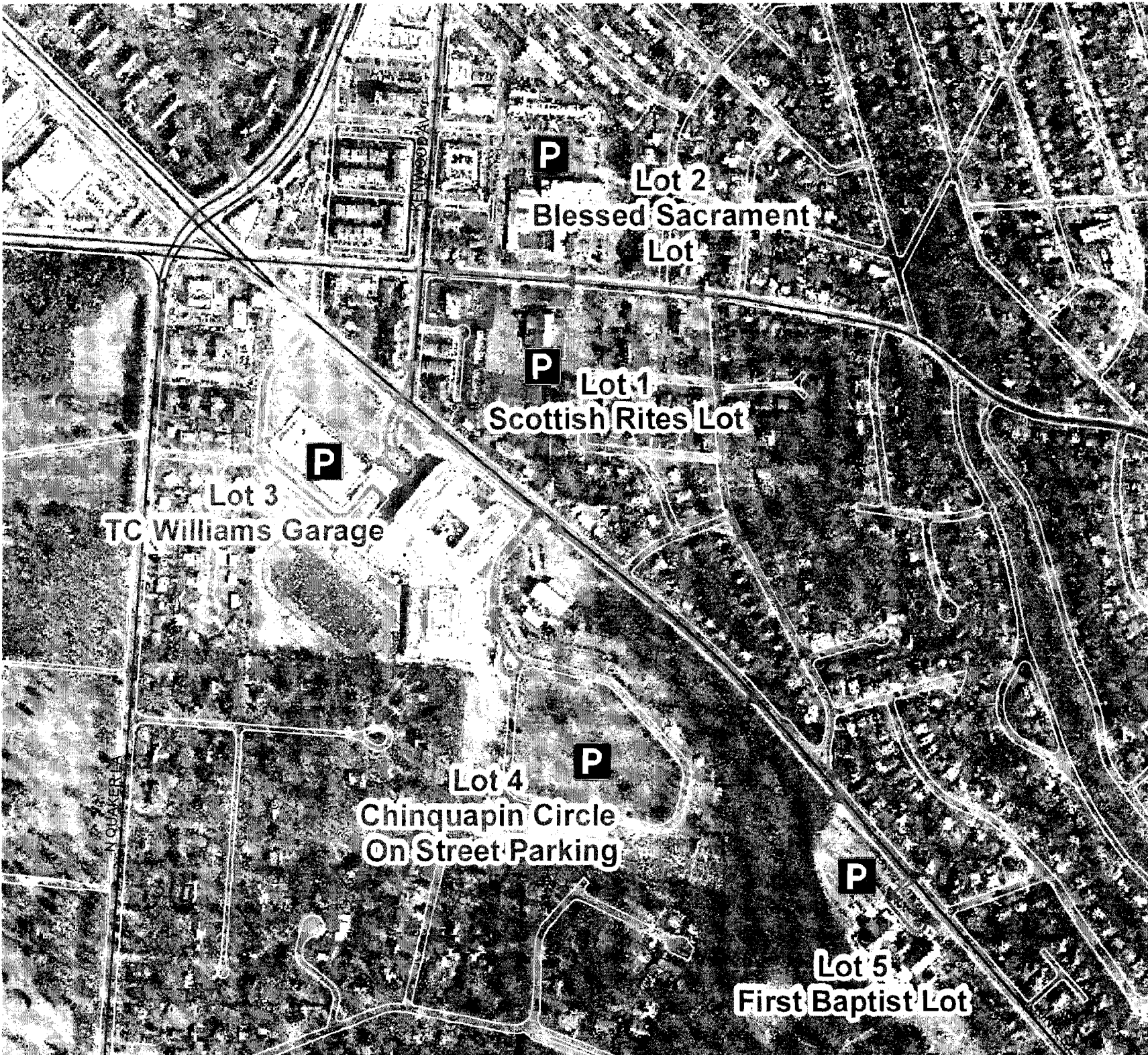
Mapping Standards  
Coordinate System - NAD83 State Plane Virginia North  
Projection - Lambert Conformal Conic  
Map Units - Feet

N



Proj #

Map Produced:  
2/13/2012 4:49:13 PM



NB #1  
2-14-12

## **Kilo Grayson**

---

**From:** Alexandria eNews <enews55789@enews.alexandriava.gov>  
**Sent:** Tuesday, February 14, 2012 3:32 PM  
**To:** eNews Subscribers  
**Subject:** Street & School Closures on February 16 During Funeral Service for Paramedic Joshua Weissman

On Thursday, February 16, firefighters from across the nation will convene in the City to honor fallen Alexandria paramedic Joshua Weismann.

- If possible, residents are encouraged to avoid travel or expect significant delays near event areas during the time when memorial events and funeral services on Wednesday February 15 & Thursday, February 16.
- Traffic and parking in the vicinity of the Everly Wheatley Funeral Home at 1500 West Braddock Road is expected to be significantly affected Wednesday afternoon and evening beginning around 4:00 p.m.
- Traffic is expected to be substantially impacted between 10 a.m. and 4:30 p.m. on Thursday as the following streets will be closed intermittently for the funeral service. We ask that community members avoid these areas if possible and be patient with delays during this event.
- The memorial processional and services are expected to bring more than 200 fire vehicles and more than 2,000 people into Alexandria. Community members should avoid these areas if possible and be patient with delays during this event.

### **Street Closures & Potential Traffic Impacts**

From time to time during the day, the following streets will be closed to facilitate movement of the funeral procession and the participants:

- Janney's Lane from King Street to Quaker Lane
- Seminary Road from Quaker Lane to Van Dorn Street
- Van Dorn Street from Seminary Road to Braddock Road
- Braddock Road from Van Dorn Street to King Street
- King Street from Braddock Road and Quaker Lane to Russell Road

### **School Early Dismissals**

- Alexandria City Public Schools will alter dismissal times to ensure that students can safely leave school and be transported to their afterschool destinations in the midst of road closures and unprecedented traffic.
- George Washington and Hammond Middle schools, Minnie Howard School, T.C. Williams High School and Douglas McArthur Elementary will dismiss at 12:35 p.m.
- All remaining elementary schools will dismiss at 1:20 p.m.
- The City has coordinated with Campagna Center after care programs and Power-On /Power-Up after care programs at City recreation centers to provide child care for families currently enrolled in these programs. In addition, recreation centers at Charles Houston, Cora Kelly, William Ramsay, Patrick Henry, Mount Vernon, Charles Barrett, Nannie Lee, and John Adams will be open immediately following the early dismissal.

The City of Alexandria would like to thank the entire Alexandria community for their patience and flexibility as the Alexandria Fire Department pays tribute to Paramedic Joshua Weissman.

For additional information, visit [alexandriava.gov/LODDJWeissman](http://alexandriava.gov/LODDJWeissman) or call 703.746.HELP.

You are receiving this e-mail message because you are subscribed to one or more of the following groups in the City of Alexandria's free eNews service:

All users

Click here to change your eNews subscription choices: <http://enews.alexandriava.gov/mygroups.php>

Click here to remove your eNews account altogether: <http://enews.alexandriava.gov/userpage.php>