

**CITY COUNCIL WORK SESSION
ON THE
OLD TOWN AREA PARKING STUDY WORK GROUP
FINAL RECOMMENDATIONS**

**TUESDAY, OCTOBER 12, 2010
5:30 PM
CITY COUNCIL WORK ROOM**

AGENDA

- I. Welcome and Introductions Mayor William D. Euille
- II. Old Town Area Parking Study Work Group Introduction and Parking Study Overview Andrea Wilkinson, T&ES and Abi Lerner, Deputy Director, T&ES
- III. Establishment of Work Group and Council Directives Andrea Wilkinson, T&ES and Abi Lerner, Deputy Director, T&ES
- IV. Work Group Recommendations on Discussion Topics Andrea Wilkinson, T&ES and Abi Lerner, Deputy Director, T&ES
- V. Staff Recommendations Andrea Wilkinson, T&ES and Abi Lerner, Deputy Director, T&ES
- VI. Recommendations Relative to Waterfront Concept Plan Andrea Wilkinson, T&ES and Barbara Ross, Deputy Director, P&Z
- VII. Next Steps Andrea Wilkinson, T&ES and Abi Lerner, Deputy Director, T&ES
- VIII. Discussion: Questions and Answers City Council

Individuals with disabilities who require assistance or special arrangements to participate in the City Council Work Session may call the City Clerk and Clerk of Council's Office at 703-746-4500 (TTY/TDD 838-5056). We request that you provide a 48-hour notice so that the proper arrangements may be made.

Old Town Area Parking Study Work Group
Final Recommendations
September 2010

ATTACHMENT

Option	Disabled pay to park policy "All May Park, All Must Pay"	Installation of new meters in commercial areas	Parking Garages/Lots	Valet Parking
#1	No. of disabled spaces should start at 2% of all metered spaces. Spaces should be distributed throughout the Old Town Area.	Install multispace meters in blocks that are fully commercial (based on ground floor usage).	Improve City-owned parking lots: lighting, cleanliness, markings, signs, and accept multiple forms of payment.	Use City-owned lots for valet parking.
#2	Place 4-hr meters at designated disabled spaces.	Install meters only in blocks that are fully commercial, except between 700 and 1500 blocks of King and side streets in that section.	Implement validation program to encourage use of garages, but improved program w/ lessons learned from Park Alexandria.	Use spaces on King St for valet parking.
#3	Implement issuance of waivers to allow disabled not to pay meter fees based on income.	Install meters in combination blocks that are high activity/utilization. Allow for 1/2 blocks.	City-owned facilities should charge market rates at night.	Explore funding for valet parking.
#4	Implement technologies to allow 4-hr max time for disabled users at non-designated spaces such as in-vehicle parking devices.	Consider proximity and price of off-street parking facilities as criteria for placing new meters.	Develop brochure for users in partnership with others (CoC, AVCA, etc.) to distribute parking information.	Do not have City operated valet.
#5	Install parking meters at handicapped spaces that accept credit cards.	Divide study area into sections and do not treat area homogenously.	Improve parking information on City website.	
#6	Implement policy only after proper meter infrastructure is in place.	Do not change.	Work with private garages to extend hours.	
#7	Do not change.		Do not change.	

Final work group recommendations are in bolded text.

* No options shall impact placement of disabled spaces.

** To be explored 6 months after other measures are implemented, parking utilization is studied (including permit vs non-permit), and public input is gathered.

Old Town Area Parking Study Work Group
Final Recommendations
September 2010

Option	Extension of meter hours	Meters with shorter maximum allowable times	Time limits in residential neighborhoods for non-permit holders	Meters in residential neighborhoods	Variable Parking Rates	Multispace Meters	Pay-by-Phone
#1	Extend meter hours until 10pm on existing operational days.	Place 1 or 2 30-min meters per block.	Implement online permitting system for permit holders and their guests and visitors.	Install parking meters in residential neighborhoods and give residents one reusable hang tag/pass for visitors.	Do not implement.	Install Multispace Pay and Display meters for new meter installations.	Implement Pay-by-phone technology at metered spaces.
#2	Extend meter hours until 10pm and include Sundays and holidays.	Place 1 or 2 1-hr meters per block.	Implement residential/permit parking during evening hours (i.e. 6pm-6am)**. Research further to revisit in future.	Install parking meters in residential neighborhoods and give residents (X) online permits per year for visitors.		Replace existing single-space individual meter heads with multispace meters.	Do not implement pay-by-phone technology.
#3	Do not change.	Place 1-hr meters on King St and 2-hr meters on side streets	Do not change.	Do not change.		Do not change.	
#4		Do not change.					
#5							
#6							
#7							

Final work group recommendations are in bolded text.

* No options shall impact placement of disabled spaces.

** To b ** To be explored 6 months after other measures are implemented, parking utilization is studied (including permit vs non-permit), and public input is gathered.

EXHIBIT NO. 1

WS
10-12-10

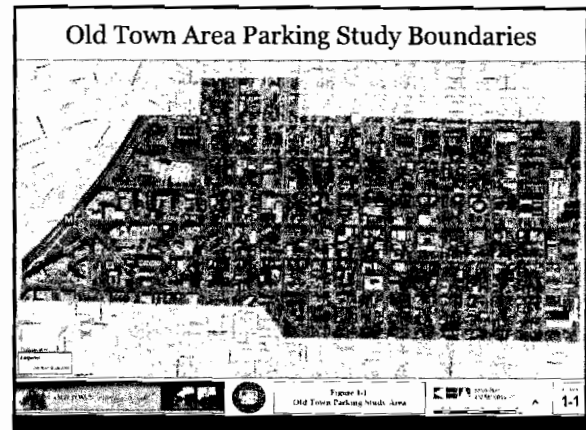
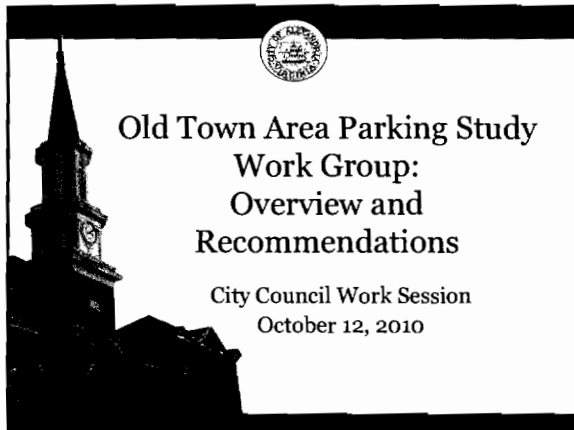
**CITY COUNCIL WORK SESSION
ON THE
OLD TOWN AREA PARKING STUDY WORK GROUP
FINAL RECOMMENDATIONS**

**TUESDAY, OCTOBER 12, 2010
5:30 PM
CITY COUNCIL WORK ROOM**

AGENDA

- | | | |
|-------|--|---|
| I. | Welcome and Introductions | Mayor William D. Euille |
| II. | Old Town Area Parking Study Work Group Introduction and Parking Study Overview | Andrea Wilkinson, T&ES and Abi Lerner, Deputy Director, T&ES |
| III. | Establishment of Work Group and Council Directives | Andrea Wilkinson, T&ES and Abi Lerner, Deputy Director, T&ES |
| IV. | Work Group Recommendations on Discussion Topics | Andrea Wilkinson, T&ES and Abi Lerner, Deputy Director, T&ES |
| V. | Staff Recommendations | Andrea Wilkinson, T&ES and Abi Lerner, Deputy Director, T&ES |
| VI. | Recommendations Relative to Waterfront Concept Plan | Andrea Wilkinson, T&ES and Barbara Ross, Deputy Director, P&Z |
| VII. | Next Steps | Andrea Wilkinson, T&ES and Abi Lerner, Deputy Director, T&ES |
| VIII. | Discussion: Questions and Answers | City Council |

Individuals with disabilities who require assistance or special arrangements to participate in the City Council Work Session may call the City Clerk and Clerk of Council's Office at 703-746-4500 (TTY/TDD 838-5056). We request that you provide a 48-hour notice so that the proper arrangements may be made.



Old Town Area Parking Study Work Group Members

- Transportation & Environmental Services
- Planning & Zoning
- Alexandria Commission on Persons with Disabilities
- Old Town Business and Professional Association
- Chamber of Commerce
- Citizens/Civic Associations
- USPTO
- Real Estate
- Restaurants
- Hotels
- Parking Garages
- Retail

Old Town Area Parking Study Work Group

Purpose:

- Improve parking management in the Old Town area through implementation of recommendations set forth in the Old Town Area Parking Study.

Goals:

- Discuss selected recommendations from the Old Town Area Parking Study
- Establish plan for implementation of selected recommendations

Old Town Area Parking Study Work Group

Recommendations topics to discuss:

- **Short-term**
 - Variable meter parking durations
 - Extension of on-street parking meter hours
 - Addition of new multispace meters in the Old Town area
 - Disabled pay to park policy
- **Long-term**
 - Parking time restrictions in residential permit areas
 - Use of parking garages

Parking in Residential Areas Work Group Recommendations

Addition of Meters for Non-Permit Holders

- **Do not add meters in residential areas.**
 - Adding meters will create a “domino” effect, pushing parkers further into the residential area
 - Adding hardware to residential streets affects aesthetics

Parking in Residential Areas Work Group Recommendations

Time Restrictions for Non-Permit Holders

- Do not decrease time limits for non-permit holders in residential areas.
 - Visitor permits are difficult for residents to obtain
 - Research implementation of permit only parking during evening hours in residential areas

Meters in Commercial Areas Work Group Recommendations

Meter Operational Hours

- Extend operational hours until 10 pm.
 - Continues turnover into evening hours
 - Reduces use of on-street parking for evening employees
 - Georgetown and Bethesda meters operate until 10pm

Meters in Commercial Areas Work Group Recommendations

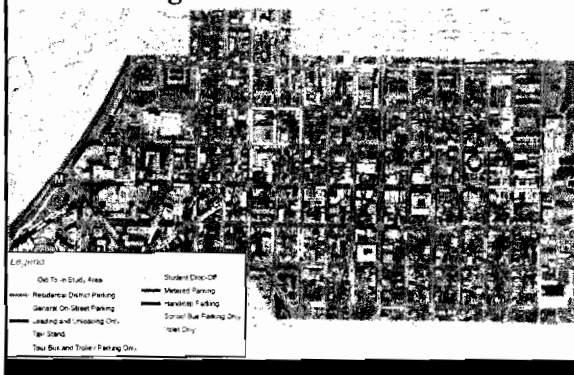
- Do not install meters with 30- or 60-minute time limits.
 - May cause confusion in users
 - Requires additional signs
 - Location cannot be tied to land use
 - Proper parking management aims for 1 or 2 available spaces per block
- Do not implement variable parking rates.
 - May cause confusion to users/visitors
 - May be used in the future

Meters in Commercial Areas Work Group Recommendations

Meters Fronting Commercial Uses

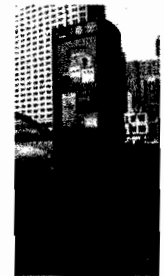
- Add meters in non-metered blocks that are fully commercial.
- Add meters in combination (residential/commercial) blocks that are high activity/utilization.
- Consider proximity and price of off-street parking facilities when placing new meters.

Existing Meters in Old Town Area



New Technologies Work Group Recommendations

- Implement pay-by-phone technology at metered spaces.
 - Install multispace pay-and-display meters for additional meter installations.
 - Replace existing single space individual meter heads with multispace meters.*
- * Recommendation has been approved and implementation is in progress.



“All May Park, All Must Pay” Work Group Recommendations



Concern:
Number and location of disabled spaces

ADA Guideline for off-street lots:
2% for 1000 spaces

Work Group Recommendation:
Designate 2% of metered spaces as disabled and monitor spaces for occupancy to ensure that appropriate number of spaces are provided.

Note: 2% is not a maximum

“All May Park, All Must Pay” Work Group Recommendations

Concerns:

- Multispace pay-and-display meters are difficult for the mobility impaired.
- Disabled persons need longer than 2 hour parking at meters.

Work Group Recommendations:

- Install a 4 hour single space meter at each designated handicapped space.
- Work with vendors to allow 4 hours of parking for disabled at other spaces.

“All May Park, All Must Pay” Work Group Recommendations

Concern:
Single space meters need too many coins.

Work Group Recommendations:

- Offer multiple payment options at designated disabled spaces.
- Explore in-vehicle payment devices.
- Explore use of pay-by-phone.

Note: Pay-by-phone vendors charge a usage fee (normally 35 cents) to the user.

“All May Park, All Must Pay” Work Group Recommendations

Concern:
Meter fees are prohibitive for some disabled persons.

Work Group Recommendation:
Issue waivers based on income for low income disabled residents.

Notes:

- Able bodied persons have ability to walk from “free” parking areas.
- ACVA has free parking program for visitors.

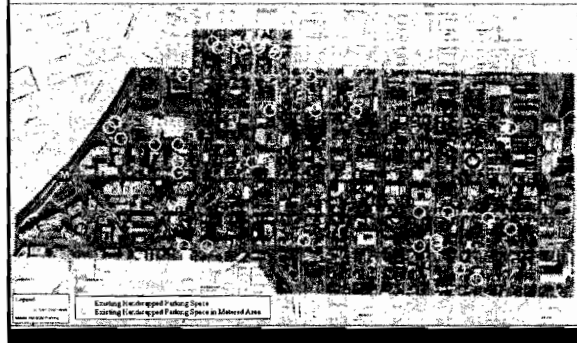
“All May Park, All Must Pay” Work Group Recommendations

Concern:
Policy will have negative impact on the disabled community.

Work Group Recommendation:
Implement policy only after proper meter infrastructure is in place.

Note: Enforcement is key.

Designated Handicapped Spaces in the Old Town Area



Off-Street Parking Facilities Work Group Recommendations

- Improve City-owned facilities.
- Develop brochure for users in partnership with ACVA, Chamber of Commerce, etc.
- Improve parking information on City website.
- Work with private garages to extend hours.
- Use City-owned facilities for valet parking.

Staff Recommendations

- Do not make changes in residential area until further data collection is complete.
- Do not extend meter hours until 10pm.
- Implement "All May Park, All Must Pay" once appropriate technologies are in place.

Staff Recommendations

- Implement pay-by-phone technology.
- Add meters in fully commercial blocks.
- Add meters in high occupancy residential/commercial blocks.
- Improve parking information for users.
- Continue to work with garage owners.

Parking Study Recommendations and the Waterfront Concept Plan

- Wayfinding to direct parkers to appropriate facilities
- Publicly accessible parking garages to meet current demand
- Valet parking to maximize capacity
- Parking management to reduce "cruising" congestion
- Private garage capacity to answer future demand

Next Steps & Schedule

- Replacement of single space meters with multispace meters (completed April '11)
- Installation of parking wayfinding signs (completed April '11)
- Data collection in residential Old Town areas (est. completion Spring '11)
- Implementation of Council supported recommendations (ongoing)

Thank you!

Questions?

Existing Meters in Old Town Area



Designated Handicapped Spaces in the Old Town Area

