

Docket Item # 6
BAR CASE # 2009-0212

BAR Meeting
October 7, 2009

ISSUE: Alterations

APPLICANT: Alexandria Commission for the Arts and Alexandria Sculpture Festival

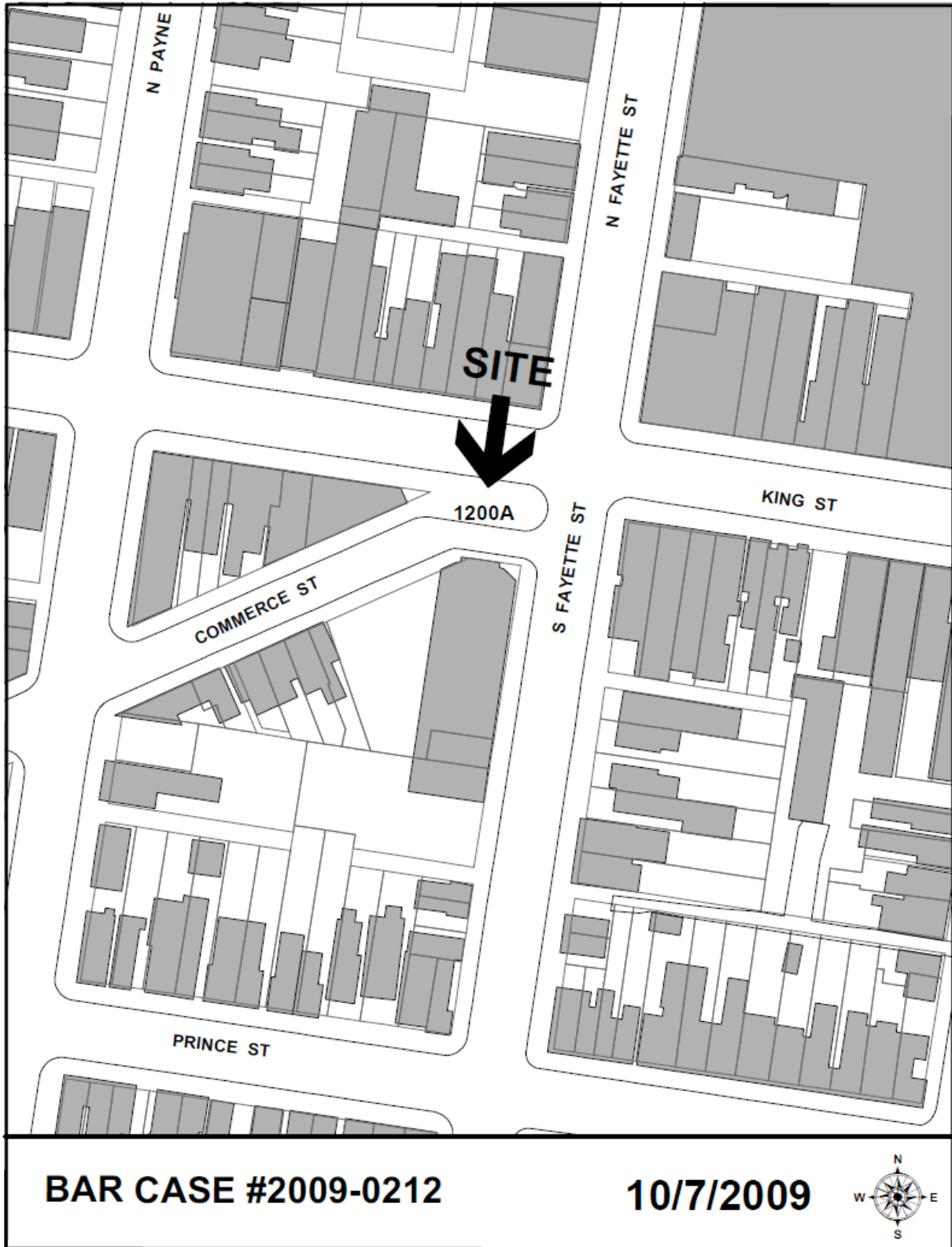
LOCATION: 1200A King Street

ZONE: KR / King Street Retail

STAFF RECOMMENDATION: Staff recommends approval as submitted.

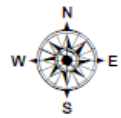
*EXPIRATION OF APPROVALS NOTE: In accordance with Sections 10-106(B) and 10-206(B) of the Zoning Ordinance, any official Board of Architectural Review approval will expire 12 months from the date of issuance if the work is not commenced and diligently and substantially pursued by the end of that 12-month period. In the case for a certificate or permit for a project that requires a development special use permit or site plan under section 11-400 of the zoning ordinance, the period of validity shall be coincident with the validity of the development special use permit or site plan as determined pursuant to section 11-418 of the ordinance.

**BUILDING PERMIT NOTE: Most projects approved by the Board of Architectural Review require the issuance of one or more construction permits by Building and Fire Code Administration (including signs). The applicant is responsible for obtaining all necessary construction permits after receiving Board of Architectural Review approval. Contact Code Administration, Room 4200, City Hall, 703-746-4200 for further information.



BAR CASE #2009-0212

10/7/2009



I. ISSUE:

The applicant is requesting re-approval of previously approved plans for a Certificate of Appropriateness for the new base of the Sacandaga Totem sculpture and associated lighting. The sculpture will be located in the plaza area formed at the intersection of South Fayette Street, King Street, and Commerce Street.

On January 22, 2008, the City Council unanimously accepted the totem sculpture, created by artist John Van Alstine, as a gift to the City by the Alexandria Sculpture Festival (ASF). Among the conditions of the gift, stipulated by the ASF to the Mayor and Council, was that it would be located at the southwest corner of King and Fayette Street. Council agreed to the location for the placement of the sculpture.

Following the acceptance of the totem/sculpture by the Council, Staff from the Parks and Recreation and Planning and Zoning Departments, met with representatives of the ASF and their landscape architecture firm, Stephenson & Good, to develop an appropriate design for the base and the lighting of the totem. The discussion included where to locate the base and any new lighting poles so as not to impede pedestrian flow along King Street through the plaza, or impact existing trees wells, man holes, and the recently installed drinking fountain.

Since the approval on July 9, 2008, the applicant has made the following minor changes to the original submission:

- Reduction of the thickness of the granite base curbing to six inches (original proposal was 12 inches);
- Change in specification of granite to “Virginia Mist” with a thermal finish, consistent with granite curbs in the historic district.

Base:

The proposed base for the sculpture consists of brick paving, in a radial running bond, with a rectangular base plate on which the sculpture will rest. The rectangular steel base plate will be installed on a concrete foundation surrounded by a granite curb approximately 3” taller than the brick paving. Despite the reduction in the thickness of the granite, the exposure of the granite base above the brick paving will remain the same as originally proposed. The steel plate will project about ¾” over the granite curb. The dimensions of the base will be 5’3” x 3’8”. A 12” x 12” cast bronze dedication plaque will be mounted flush with the radial brick pattern pavement, in the northern arc of the brick pattern.

Lighting:

Two new linear pole lights are proposed to be installed in the plaza area, to illuminate the sculpture and provide lighting enhancement to the plaza area. The light poles will be installed towards the center of the plaza, at the ends of the proposed location of the benches. The light poles are manufactured by BEGA, in black aluminum, with a clear aluminum section housing the lighting element. The poles are each 12’ in height. A site rendering showing the proposed poles was submitted by the applicant, as well as a photometric study.

II. HISTORY:

The brick plaza located at the intersection of King Street, Commerce Street, and South Fayette Street has been in this configuration for decades. The four metal benches were installed by the City in recent years and were recently relocated towards Commerce Street.

In 2006, the Board approved a drinking fountain that was installed in the plaza area, (BAR Case #2006-0122). In July 2008, the Board approved a Certificate of Appropriateness for alterations for the base of the Sacandaga Totem sculpture and associated lighting (BAR Case # 2008-0096). Because construction on the project had not begun, the approval expired.

III. ANALYSIS:

Proposed alterations comply with zoning ordinance requirements.

For this application, the Board's purview is limited to the appropriateness of the proposed base, location within the plaza and lighting within the plaza area. As stated previously, the City Council has accepted the Sacandaga Totem sculpture and determined that it will be located in this plaza and that the sculpture will be illuminated.

In Staff's opinion, the proposed base and lighting are appropriate in this context and for this use. Prior to the initial submission, the applicant worked with Staff to develop a base design that was minimal, yet compatible with the existing design of the plaza. The radial design provides a paving focal point for the sculpture within the plaza, without being too distracting or competing with the existing paving. The base itself is minimal in height and design, and allows the sculpture itself to be the dominant element in the plaza.

The proposed lighting poles are appropriately "background" elements and do not detract from the more traditional street lamps currently in the plaza. The lighting levels are minimal to provide some nighttime illumination to the totem sculpture.

Therefore, Staff supports the application for the base and the lighting. Staff has no objection to the minor modifications to the original approval. The proposed alterations will contribute to this underutilized plaza space having a more interesting and cohesive design.

IV. STAFF RECOMMENDATION:

Staff recommends approval as submitted.

STAFF:

Catherine Miliaras, Historic Preservation Planner, Planning & Zoning
Stephen Milone, Division Chief, Zoning and Land Use Services

V. CITY DEPARTMENT COMMENTS

Legend: C - code requirement R - recommendation S - suggestion F- finding

Code Enforcement:

C-1 Construction permits are required for the proposed project.

Historic Alexandria:

No comments received.

Transportation & Environmental Services:

No comments.

VI. IMAGES:

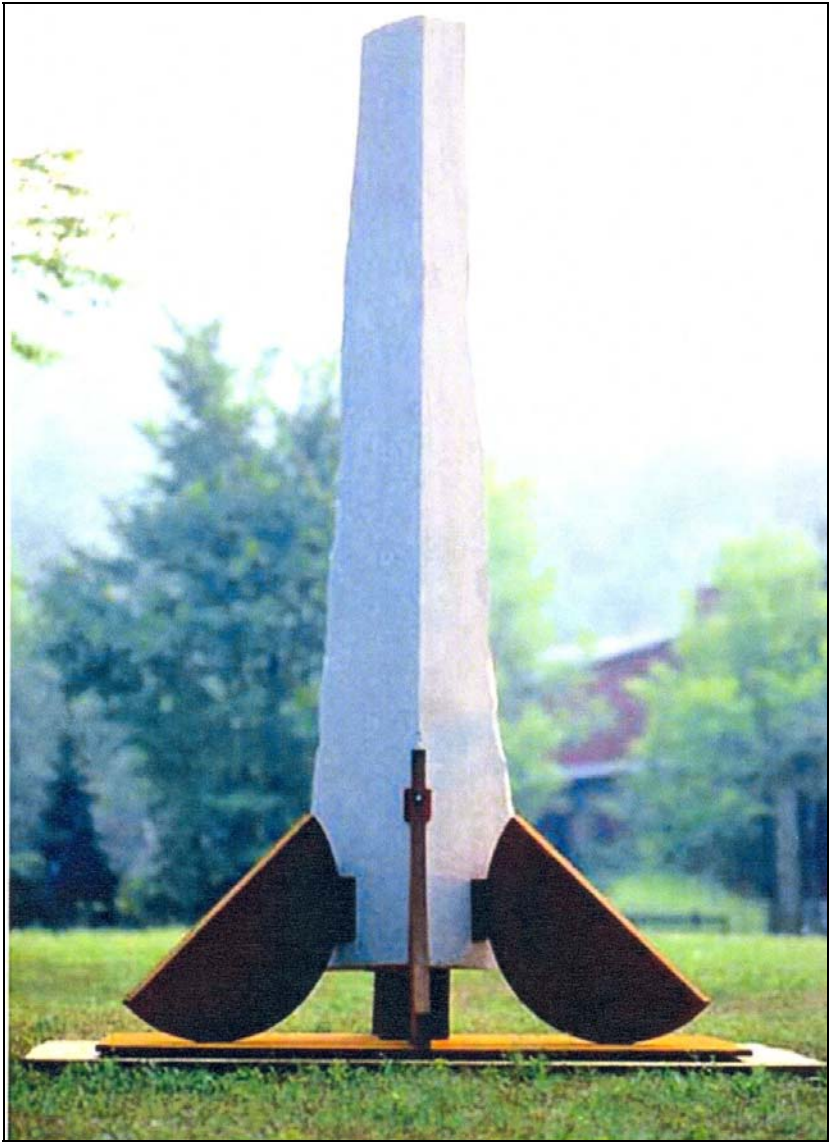


Figure 1: Sacandaga Totem Sculpture by John Van Alstine



Scale

Project

VAN ALSTINE
'SACANDAGA TOTEM'
SITING

King, Fayette & Commerce Streets
Alexandria, Virginia

The Department of Recreation,
Parks & Cultural Activities
Alexandria, Virginia

STEPHENSON & GOOD
Landscape Architecture

916 Prince Street, Alexandria, Virginia 22314
703.546.2000

© Stephenson & Good 2008

Drawing Title

Site Photographs

Drawing No.

L3.02

Figure 2. Existing conditions.

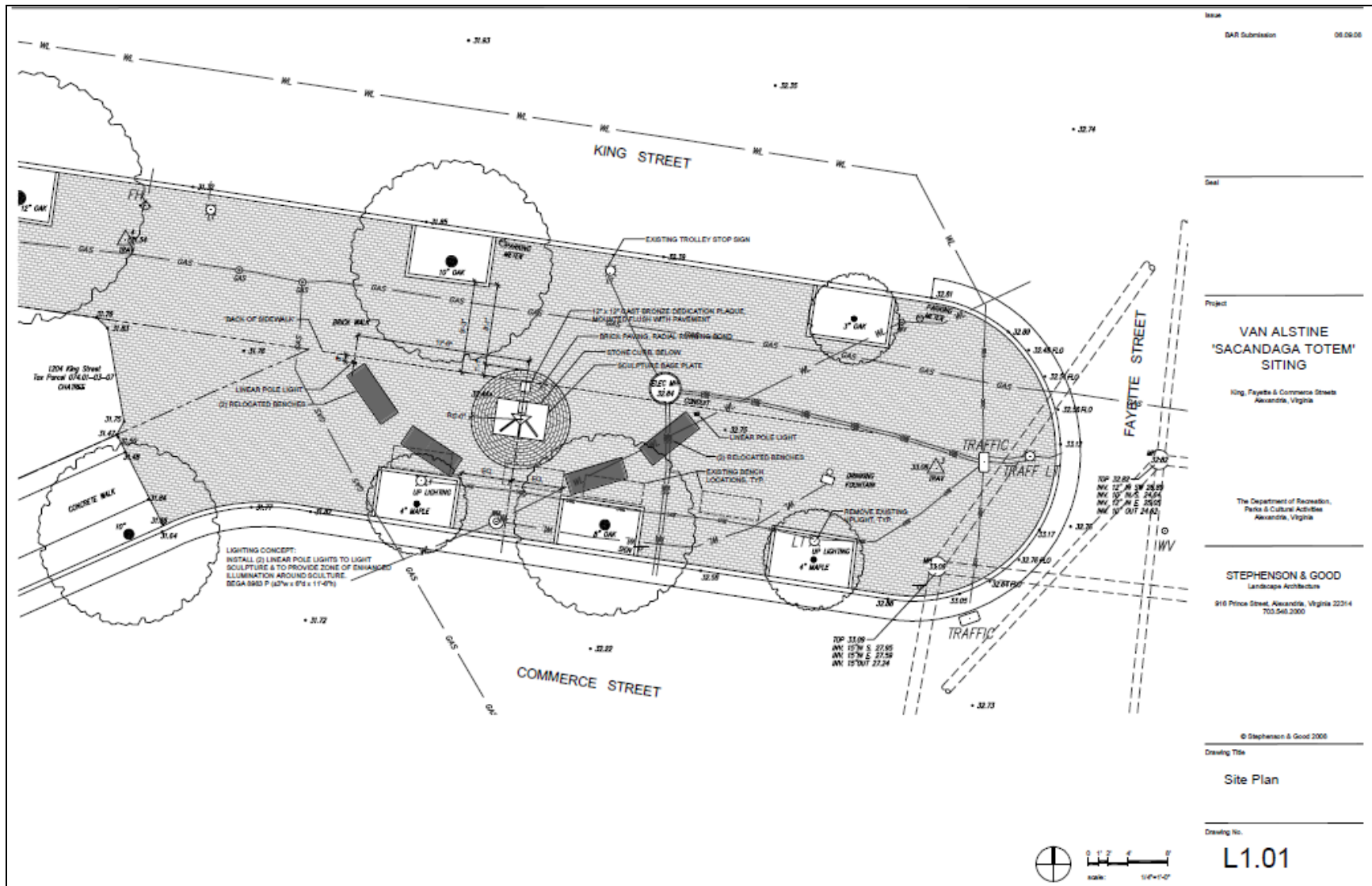


Figure 3. Proposed site plan.

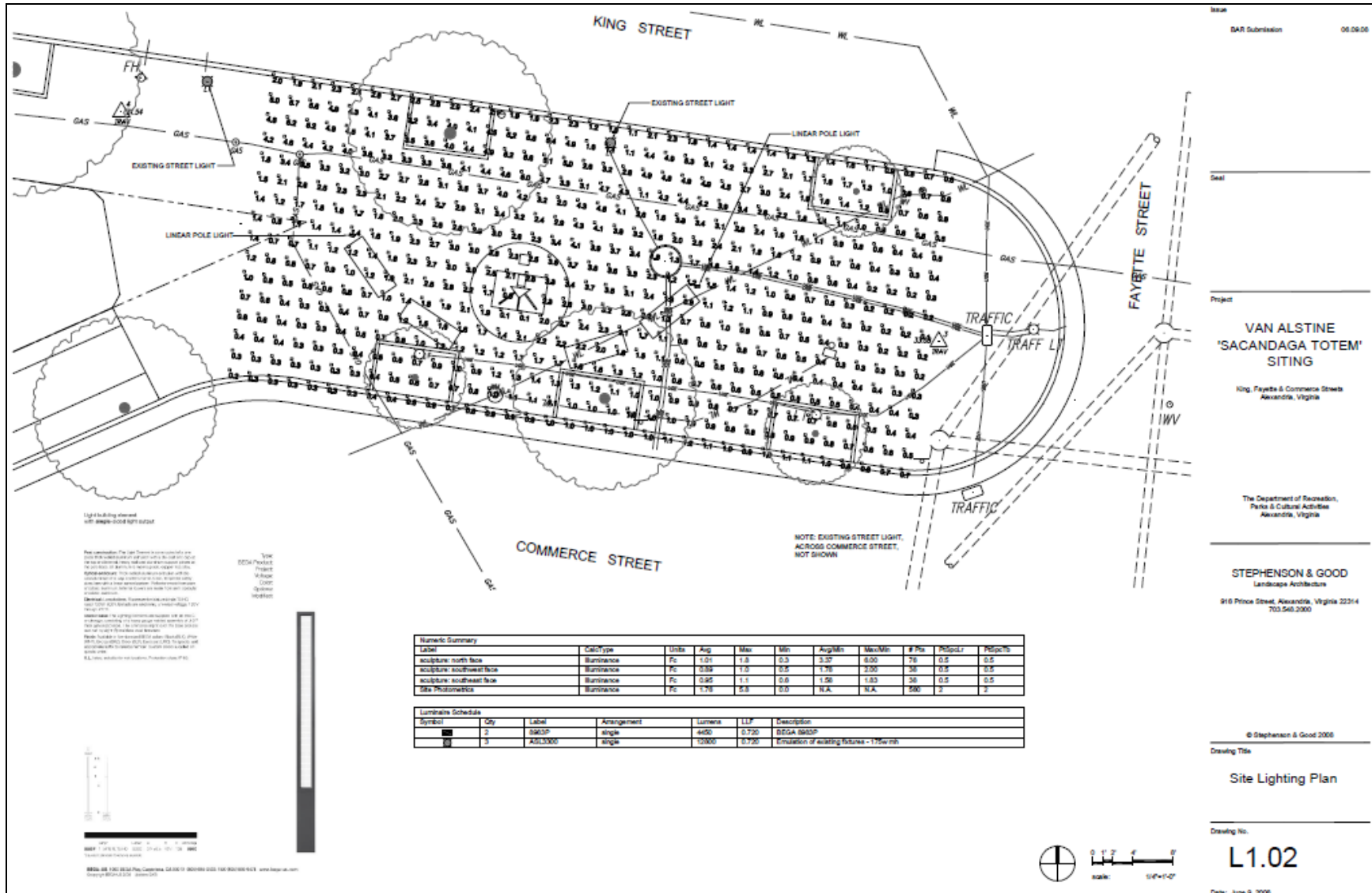


Figure 4. Site lighting plan.

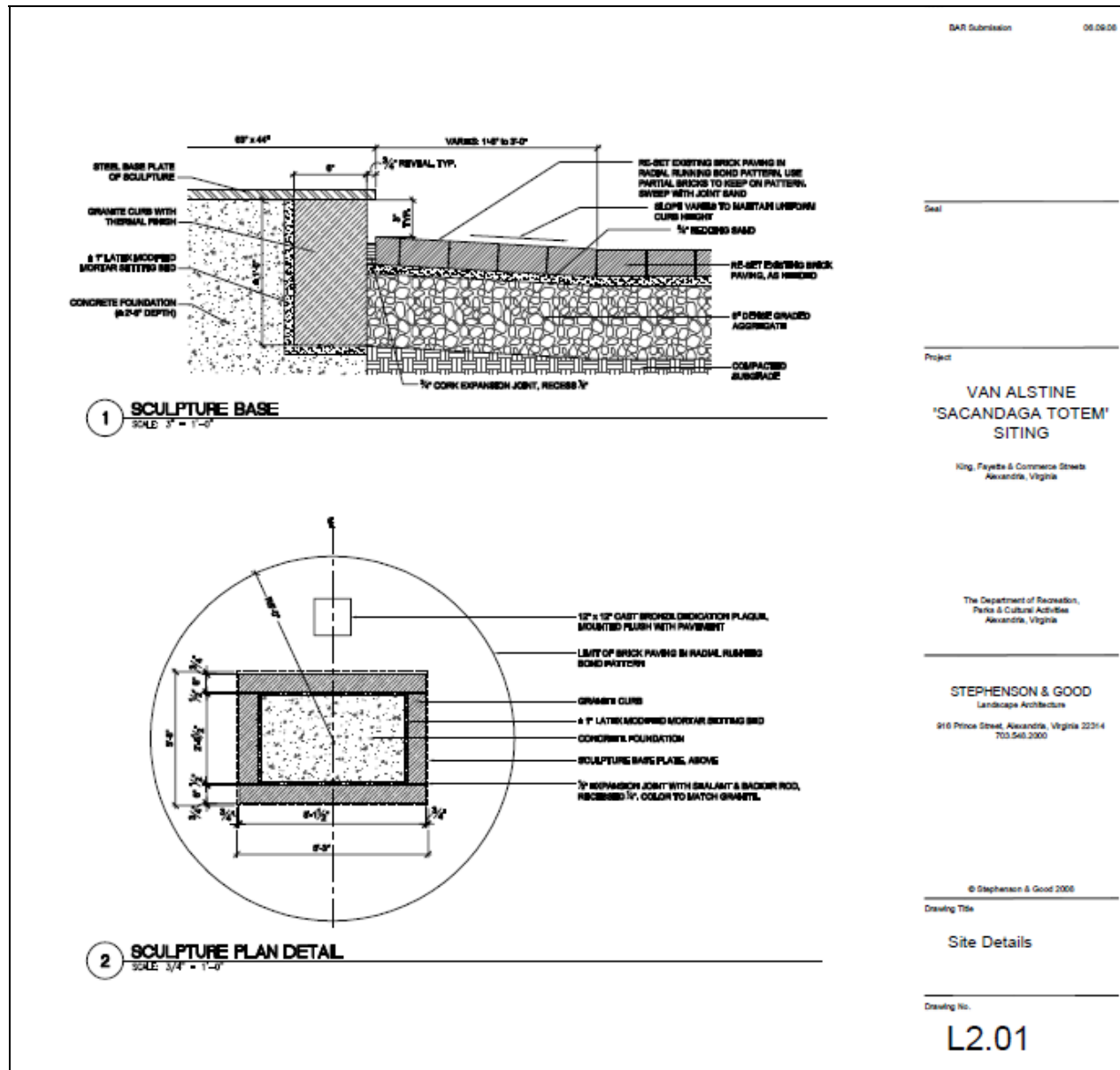
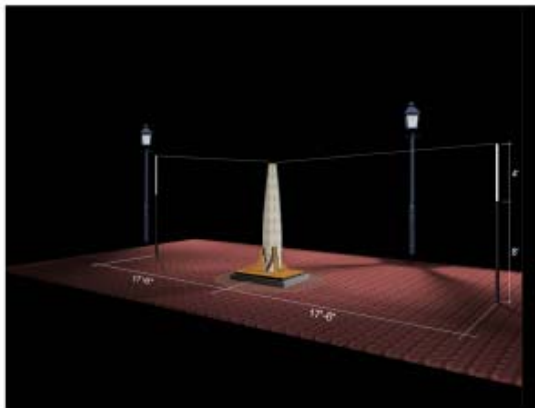


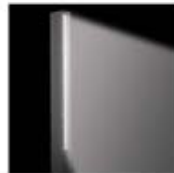
Figure 5. Sculpture base details.



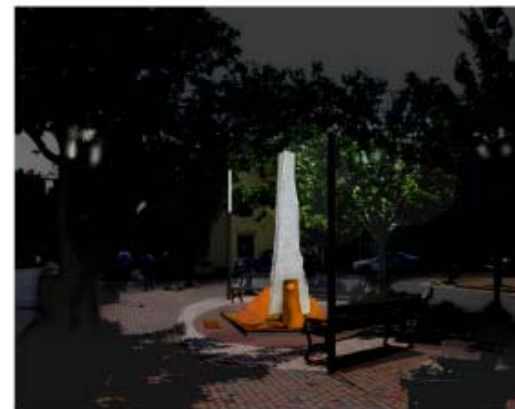
Site Photo Composite



Site Lighting Concept



Detail Photo of Linear
Light Pole



Site Photo Composite at Night

BAR Submission 05.03.08

Sheet

Project

**VAN ALSTINE
'SACANDAGA TOTEM'
SITING**

King, Fayette & Courthouse Streets
Alexandria, Virginia

The Department of Recreation,
Parks & Cultural Activities
Alexandria, Virginia

STEPHENSON & GOOD
Landscape Architecture

816 Prince Street, Alexandria, Virginia 22314
703.548.2000

© Stephenson & Good 2008

Drawing Title

Site Renderings

Drawing No.

L3.01

Date: June 2, 2008

Figure 6. Site renderings.